

SCHUUR

TECHNICAL SPECIFICATIONS

BENEDENZAAL (GROUND FLOOR AUDITORIUM)



Contact

Address: Lange Begijnestraat 9, 2011HH, Haarlem

Artist entrance: Korte Begijnestraat 2, 2011HC, Haarlem
(9:30u through 17:30u)

Address for Sat-Nav: Spaarne 32, 2011CJ, Haarlem
(please phone us at the entrance of the pedestrian area: 023-5173938)

All questions relating to information contained within this document, or requests for additional information, can be directed to our technical department:

Mail: techniek@schuur.nl

Phone: +31 (0) 23 5173900

Web: www.schuur.nl/techniek

SCHUUR

TECHNICAL SPECIFICATIONS

CONTENTS

Benedenzaal (ground floor Auditorium)	1
Contact	1
Contents	2
Important information	3
Loading / Unloading	3
Parking (passenger cars)	3
Environmental zone	3
Health and safety	3
Ground Floor Auditorium	4
General information	4
Seating Capacity	4
Times and breaks	4
Facilities	4
Stage & Auditorium overview	5
Stage, Dimensions & Rigging	6
Lighting specifications	7
Sound specifications	8
Video specifications	9
Backstage	10
Dressing Rooms	10
Washing facilities	10
Kitchen	10
Catering	10
Office	10
Appendix A: CAD Drawing top view	11
Appendix B: CAD Drawing side view	12
Appendix C: Directions	13

IMPORTANT INFORMATION

Loading / Unloading

We are in a pedestrian area that closes after 11.00h AM. After 11.00h AM, cars and trucks carrying scenery and technical equipment can gain access to the pedestrian area by calling us at +31 (0) 235173938. Please phone us approximately 5 minutes ahead of your arrival and we will come and meet you at the entrance of the pedestrian area, which is located directly to the LEFT of the "Appelaar" parking garage entrance. Please set your sat-nav to Spaarne 32, Haarlem. Directions can be found in appendix C.

Our loading bay (indoor) can hold two large trailers and loading/unloading is at stage level without any obstacles. Stage doors are 2.00 x 3.60 m (w x h).

Parking (passenger cars)

We are located in the city centre of Haarlem, within a pedestrian area. Unfortunately we don't have parking spaces for passenger cars directly at our building, but we are at a short walking distance from parking garage De Appelaar (Damstraat 12, regular parking costs apply).

Environmental zone

Haarlem city centre and surrounding areas are low-emission zones. Only trucks and buses that meet the Dutch category 6 emission standard or better are allowed in this zone. A temporary exemption can be applied for here:

<https://www.rdw.nl/ontheffing-zero-emissie/aanvragen/dagontheffing>

Please note that this website is only available in Dutch.

Health and safety

- All company staff and crew on stage during get-in/build and load-out must wear safety footwear.
- The visiting company must supply the Schuur with a Risk Assessment regarding their performance.
- It is illegal to smoke tobacco or any substitutes in any public building in The Netherlands. We will not allow smoking of cigarettes, herbal cigarettes or vapes on stage.
- The use of (fake) weapons and fire-arms on stage is strictly prohibited without official license AND prior clearance with local law enforcement. Please contact our technical department for details.

GROUND FLOOR AUDITORIUM

General information

Schuur's ground floor auditorium is a black box style venue with a retractable seating area. Excellent sightlines throughout. Stage dimensions are approx. 14.00 x 14.00 mtr with a height clearance of 6.50 mtr. Walls are made of concrete, with 2.00 x 3.60 mtr (wxh) openings with wooden doors. There's a corridor of approx. 1.85 mtr wide around the entire auditorium. The inside concrete walls and outside corridor walls can be masked with black curtains, as well as the upstage doors and walls.

Seating Capacity

Standard:	266
With extra Row 0:	282

The standard seating capacity is 266. All seats have excellent view of the stage. The first row of seating is at stage level. We can add an extra rows of 16 seats at -40cm between the stage and the row 1, providing an extra 16 seats.

Actual capacity may vary depending on the number of wheelchair reservations.

Times and breaks

Regular working hours are from 11.00h - 23.00h (1 technician during performance times)

Lunch break from 12.30h - 13.00h (communal lunch)

Dinner break from 17.00h - 19.00h

Facilities

Wheelchair access:

Wheelchairs can enter the venue without the use of an elevator and without any obstacles. Wheelchairs will be placed on the first row, in consultation with the company manager. Wheelchair places are available upon reservation.

Hearing impaired:

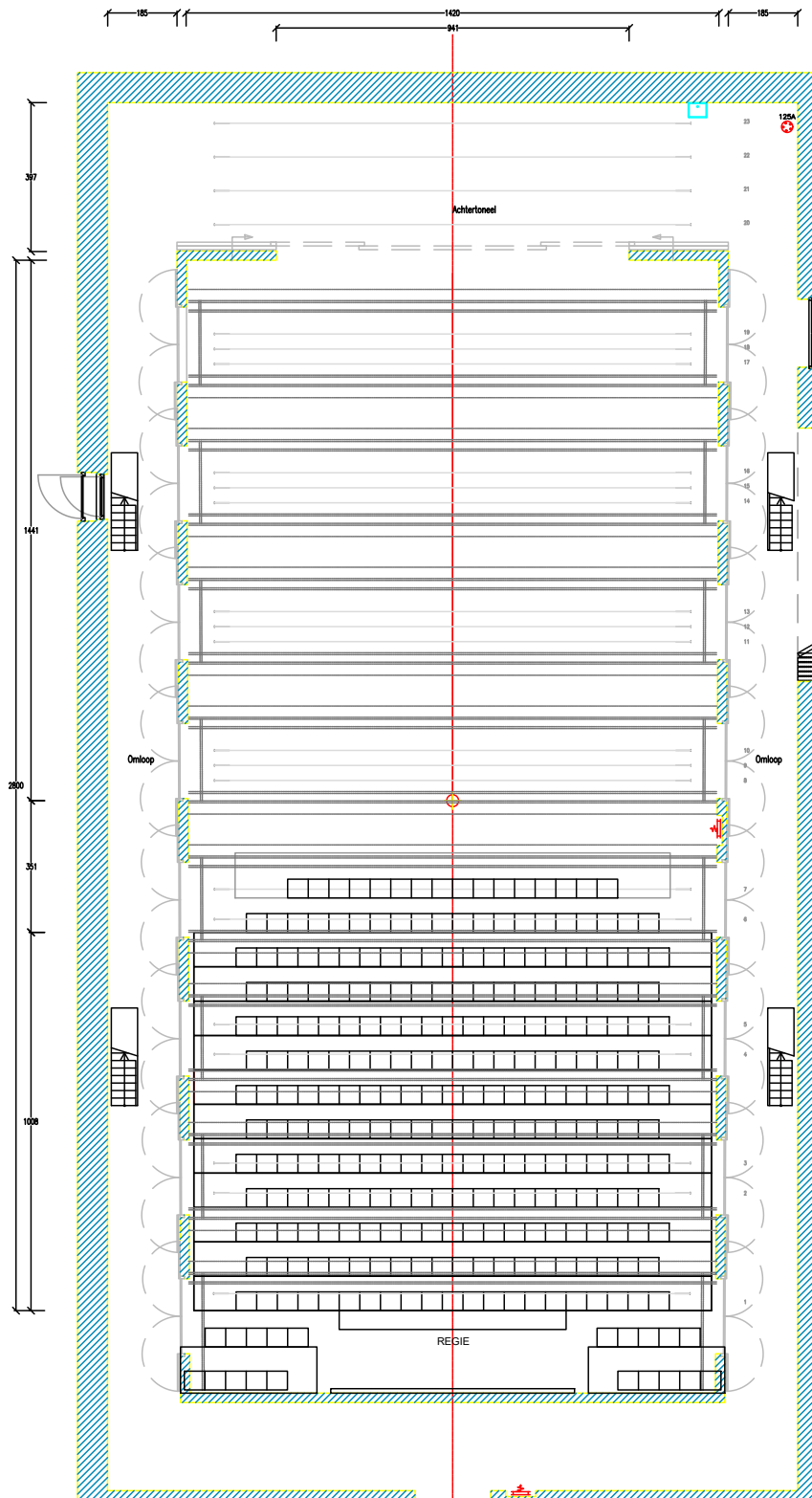
We have an RF based personal hearing enhancement system consisting of a wireless receiver beltpack with a pair of regular headphones OR a personal induction loop that can be used with most types of hearing aids. We have a total of 10 receivers shared across two auditoriums.

SCHUUR

TECHNICAL SPECIFICATIONS

STAGE & AUDITORIUM OVERVIEW

NOT TO SCALE - CAD drawings available upon request.



SCHUUR

TECHNICAL SPECIFICATIONS

STAGE, DIMENSIONS & RIGGING

We have a combination of 8 lighting bridges, side bridges at two levels and 19 computer-controlled fly bars (TNM). There is 1 locally controlled (chain hoists) fly bar for a cyclorama or a large backdrop (14.00 x 7.30 mtr) located underneath the last lighting bridge upstage. The upstage area (backstage) has an additional 4 fly bars. Please refer to drawings.

Net. stage size	14.00m x 14.00m
Distance to row 1	approx. 3.00m
Height clearance (below lighting bridges)	6.50m
Smallest passage	2.00m x 3.60m (wxh)
Floor	Kerouing, floating construction
Dance carpet	Black or grey (no screws allowed)
Masking	
Legs	8x 3.75m wide 8x 2.00m wide
Borders	2x 2.00m high 3x 1.50m high
Fly bars (Trekwerk TNM)	16 x 500 kg. (flybar 4 - 19) 7x 300 kg. (flybar 1 - 3 and 20 - 23)
Max. height	9.90m (flybar 4 - 16) 8.90m (flybar 1 - 3) 6.40m (flybar 20 - 23)
Power	1x 125A 400V Upstage Left 1x 125A 400V in Loading bay 8x 32A on floor and in lighting bridges
Water	Upstage right, tap and waste
F.O.H. position	At the back of seating area, good sightlines. Approx 5.50m wide, no seats need to be blocked.
Piano	Yamaha UX10A Upright Piano

LIGHTING SPECIFICATIONS

Lighting Desk	1	ETC EOS system (GIO or ION)
Dimmers	156	Compulite CompuDim 2,5 kW
	12	TTL 5 kW (4x 3 ch packs)
	12	25A Relay Switch
DMX	26	Patchbay - throughout auditorium
sACN	4	DMX universes
Fixtures	12	FRONT 1: ETC S4 LED X8 series 3 15-30 deg
	6	FRONT 2: ETC S4 LED X8 series 3 36 deg
	40	ADB C101 1 kW PC w/ barndoors
	24	ADB F101 1 kW Fresnel w/ barndoors
	16	Desisti Leonardo 2 kW Fresnel w/ barndoors
	32	Robert Juliat 614SX zoom profile 1 kW 15-38 deg
	8	Robert Juliat 613SX zoom profile 1 kW 25-50 deg
	16	Thomas PAR64 240V 1kW CP62 MFL
	16	Thomas PAR64 240V 1kW CP61 NSP
	16	Thomas PAR64 120V 1kW CP62 MFL
	16	Thomas PAR64 120V 1kW CP61 NSP
	15	Selecon a-symmetrical Cyclorama 1kW
	4	Vari*Lite VLX Ledwash (please check availability)
	8	Robe 150 Ledbeam (please check availability)
	8	Robe T1 Profile (please check availability)
	12	ETC Lustr Series 2 (please check availability)
	12	ETC Lustr Studio HD (please check availability)
	8	ETC Lustr+ Cyc (please check availability)
	div.	Assorted lenses for ETC LEDspots

SCHUUR

TECHNICAL SPECIFICATIONS

SOUND SPECIFICATIONS

We have a configurable 5.1 sound system, based on Adamson loudspeakers, Yamaha console, DirectOut Prodigy system processor, Lab.Gruppen amplifiers w/ LAKE processing and an Audinate Dante AoIP network. The main PA loudspeakers can be placed freely anywhere from upstage to downstage. Subwoofers, centerspeakers and surround speakers have fixed positions. We will happily configure all loudspeaker settings to your demands and output configuration (LR / LCR / 5.1 etc). Default audio inputs Dante, Madi coax and analog XLR. Our collection of (wireless) microphones is available upon request.

Mixing desk	1	Yamaha CL3 64 + 8st. in / 24 + 8 matrix out
Processing	1	DirectOut Prodigy MP <i>Dante (SRC), MADI (coax SRC), Analooog (8ch XLR)</i>
i/o	2	Yamaha Rio1608-D 16 in 8 out i/o rack
	4	12 channel multicore with patchbay at F.O.H. position
Main L/R	4	Adamson IS10P (in rails and on the floor)
Center	1	Adamson IS10P
LF L/C/R	2	Adamson IS119 (in bridge, mono)
Sub	2	Adamson IS119 (under seating area)
Surround	12	Adamson Point 8
Delay	2	Adamson IS7P (L/R)
	1	Adamson IS10P (C)
Wedges	6	EAW MW12 12" coaxial
	2	EAW JF8 8" coaxial
Amps	9	Lab.Gruppen D Series (main PA)
	5	Lab.Gruppen E Series (wedges) 10 channels
Comms	5	Riedel Bolero wireless beltpacks

VIDEO SPECIFICATIONS

We have a limited supply of Blackmagic and Decimator scalers and converters, video switchers and displays. There is some basic camera / PTZ equipment. Please contact us for details and availability.

Screens	1	16 : 9 4.00m x 2.20m front / rear (with legs)
	1	16 : 9 7.40m x 4.20m front / rear (in frame, fly only)
Projector	1	Panasonic PT-RZ120 12.000 ANSI-lumen Solid Shine Laser WUXGA
Lenses		Various throw ratios from 0.3x wide angle to long throw, please contact us for details and availability
Livestream		We can provide high speed internet connection on stage and at F.O.H. Please contact us with your needs.

BACKSTAGE

Dressing Rooms

There are three dressing rooms on the first floor. Access via stairs at upstage left. Elevator available next to auditorium entrance doors.

Dressing room 1: 8 Pax, with shower, toilet, sink

Dressing room 2: 8 Pax, with sink (shared showers and toilets)

Dressing room 3: 8 Pax, with sink (shared showers and toilets)

Dressing rooms 2 and 3 are connected through their shared bathroom (4 showers, 2 toilets, 2 sinks) and also have a shared fridge/freezer combination.

Washing facilities

We have a washing machine and a separate dryer. There are also ironing boards and irons. Please note that washing facilities are shared between two auditoriums.

Kitchen

We have a communal kitchen with cooking facilities. Please contact our receptionist at receptie@schuur.nl for availability.

Catering

Visiting companies are invited to join us for lunch in our communal kitchen. There are free coffee and tea making facilities and we offer free coffee and tea at the bar in our cafe. Dinner can be arranged upon request, please contact receptionist at receptie@schuur.nl

Office

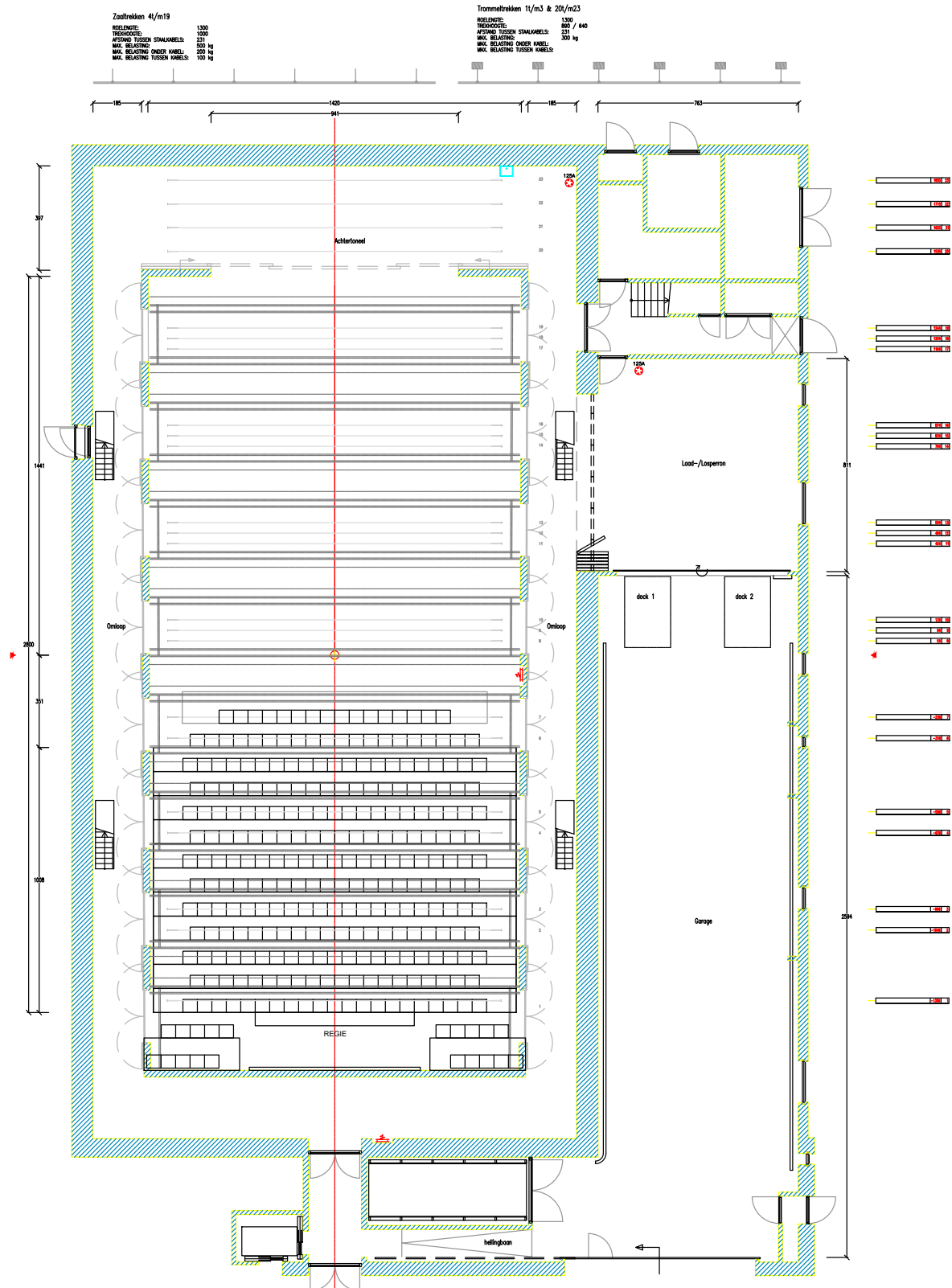
We have a wireless internet connection throughout the building free of charge. If you need to use our printers please feel free to drop by in our office.

Looking forward to welcoming you!

SCHUUR

TECHNICAL SPECIFICATIONS

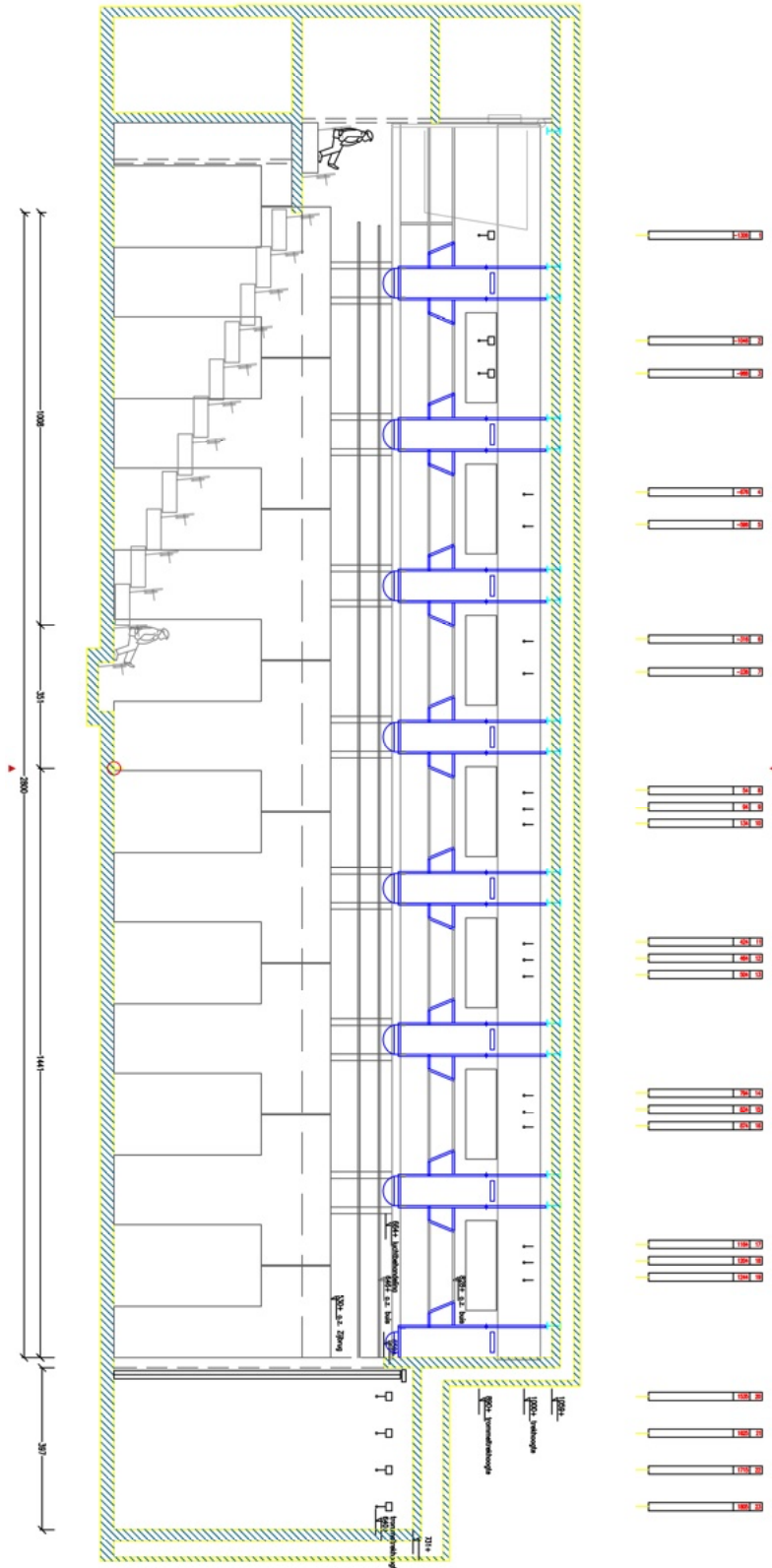
APPENDIX A: CAD DRAWING TOP VIEW



SCHUUR

TECHNICAL SPECIFICATIONS

APPENDIX B: CAD DRAWING SIDE VIEW



APPENDIX C: DIRECTIONS

ADDRESS TO USE WITH SAT-NAV:

SPAARNE 32, HAARLEM

From the A9, or from Amsterdam via Halfweg N200/A200

1. Junction Rottepolderplein: exit '**Haarlem, Halfweg**'. Follow the A200 in the direction of Haarlem.
In front of the fly-over at trainstation Spaarnwoude keep right, **direction 'Centrum'**.
2. At the last traffic lights (t-junction), **take a right**.
3. **Take a left** at the next traffic lights. Follow this road (Papentorenvest), this road will curve to the left.
4. **Cross the bridge and take a left** alongside the water. Follow the curve of the road to the right.
5. Follow directions of parking garage 'APPELAAR', to the left of the entrance of the parking garage there are retractable barrier posts (before 11:00h they will be down) that seal off the pedestrian area. Please call +31(0)23-5173938 so we can pick you up and lower the barriers.
6. Go straight and take a right in front of the church, into the 'Lange Begijnestraat'. Trucks of 8.00m and longer need to enter this street backwards.

PLEASE NOTE THAT PASSENGER CARS ARE NOT ALLOWED TO PARK IN OUR LOADING BAY

Paid parking is available in parking garage De Appelaar (2 min walk) and parking garage Station (7 min walk), regular parking costs apply.

For free parking please navigate to either Teding van Berkhoutstraat, Zuidpolderplein or Zuidpolderstraat. The Schuur is at approx. 15 minutes walk.